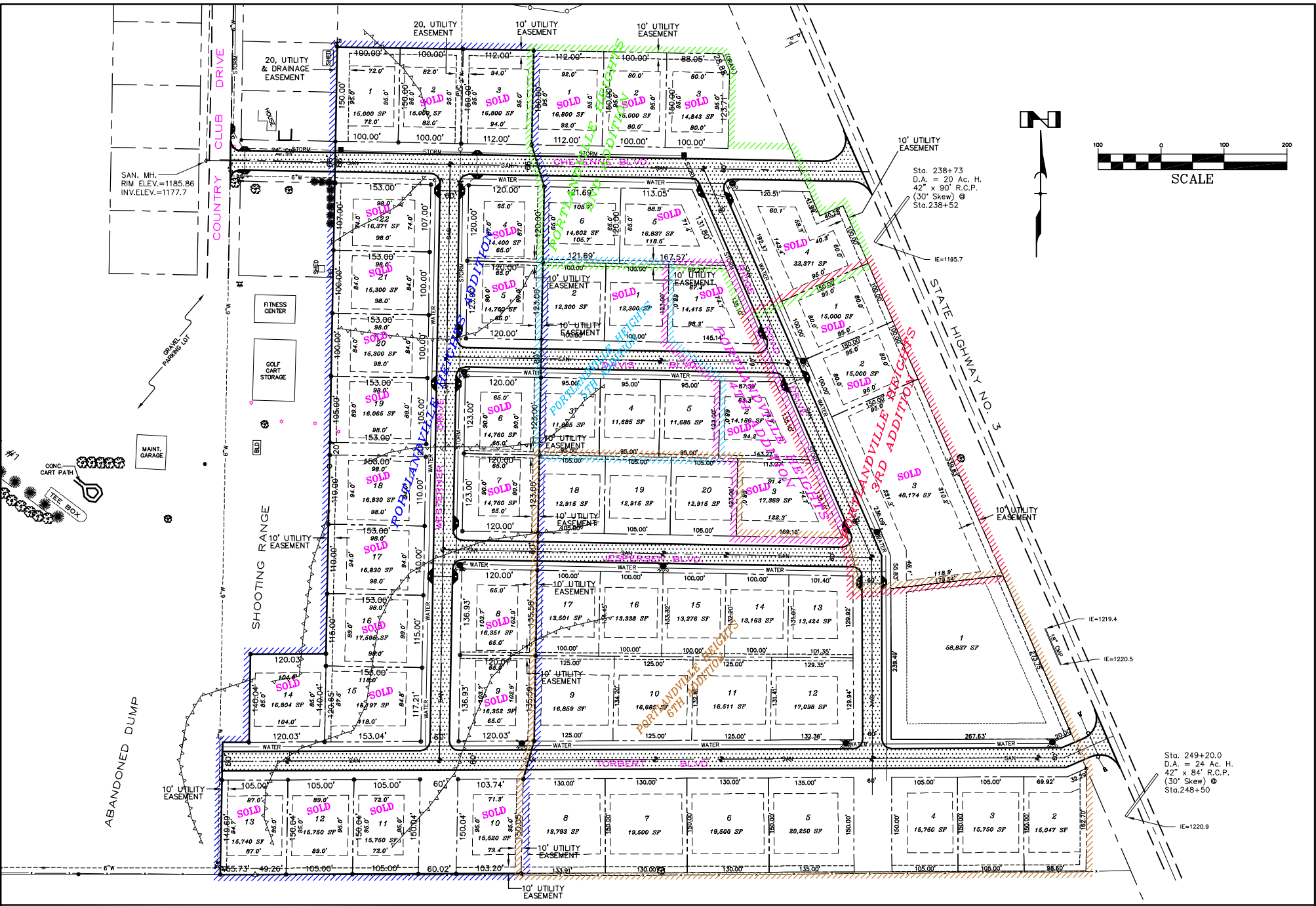


P:\259\039.dwg\Master 2010.dwg, Master Plan '10, 6/10/2010 3:52:37 PM, MAR



Sta. 238+73
D.A. = 20 Ac. H.
42' x 90' R.C.P.
(30' Skew) @
Sta.238+52

IE=1195.7

Sta. 249+20.0
D.A. = 24 Ac. H.
42' x 84' R.C.P.
(30' Skew) @
Sta.248+50

IE=1219.4

IE=1220.5

IE=1220.9



DeWild Grant Reckert & Assoc. Co.
Consulting Engineers
6115 Whispering Creek Dr., Sioux City, IA.
Tel. 712-266-1554 Fax. 712-266-1707

Portlandville Heights Master Plan

Akron, Iowa

DATE: 06-10-10
DRAWN BY: MAR
APPROVED: BNW

PROJECT NO.
259039
SHEET
1